



rioplay

Encrypted Content Player (Windows)

Download & Install RioPlay for Windows

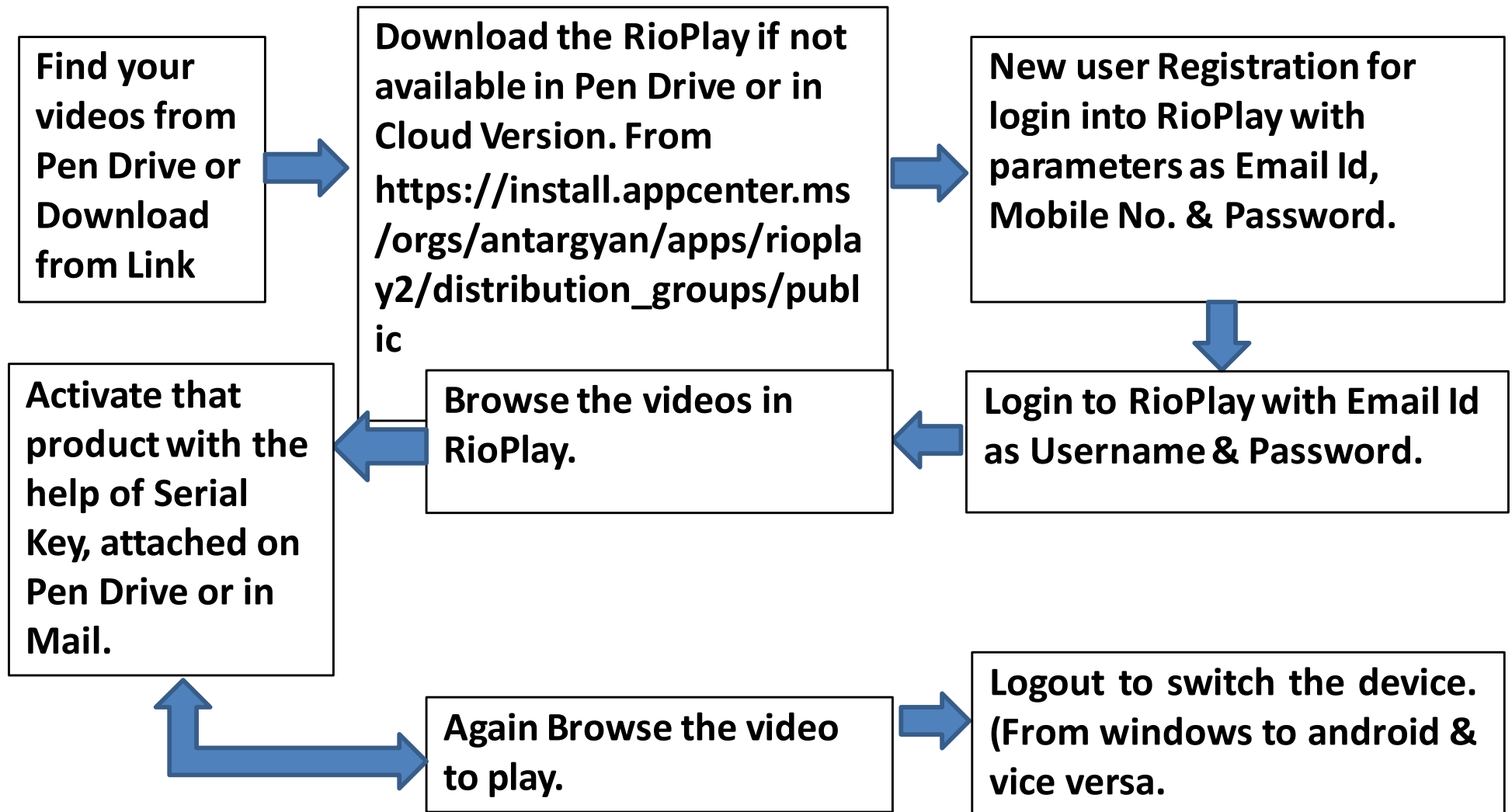
Download link

https://install.appcenter.ms/orgs/antargyan/apps/rioplay2/distribution_groups/public

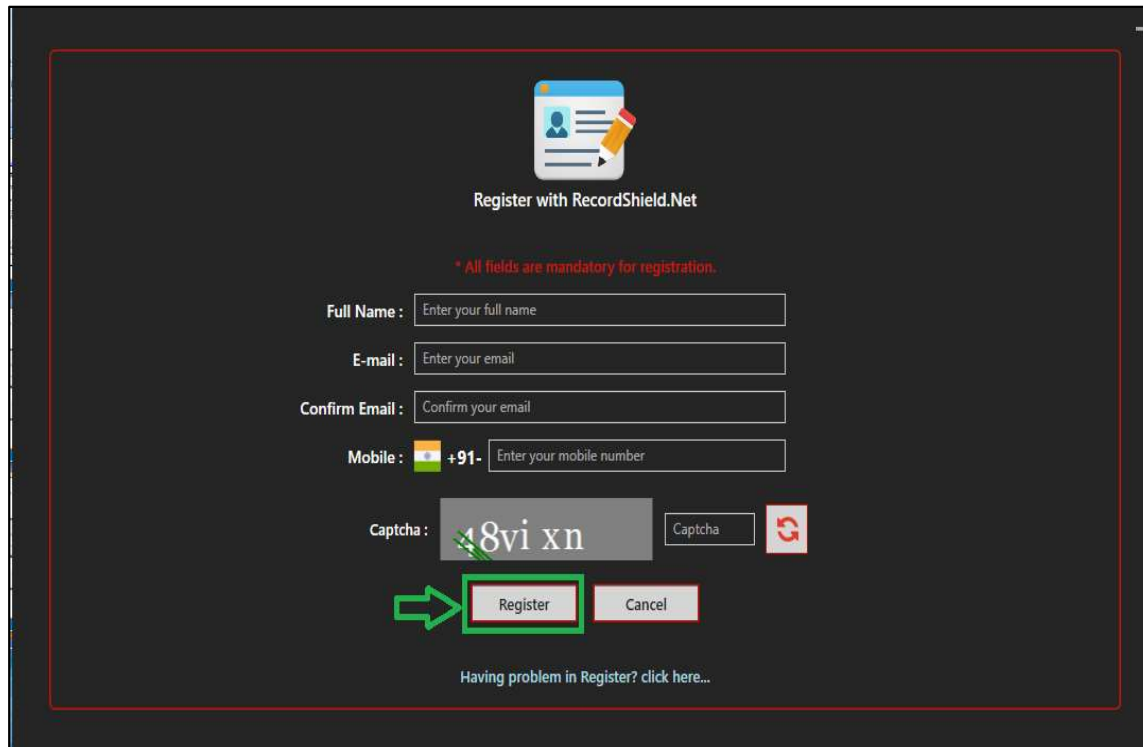
- System Requirements:
- **Windows 8.1, 10/11**
- **Microsoft. Net Framework 4.6.2**
- **Processor:** Core 2 Duo or Above (2 GHZ or Above)
- **RAM:** 2GB (Usable).
- NVidia/ Ati / Intel Extreme Graphics with minimum 256MB Video RAM and Core Clock 600 MHz.



How it works



Your account with RioPlay (New User)



The screenshot shows a registration form titled "Register with RecordShield.Net". It includes fields for Full Name, E-mail, Confirm Email, and Mobile (with a dropdown for country code and a field for the number). A captcha field displays "48vi xn". Below the captcha are "Register" and "Cancel" buttons. A green arrow points to the "Register" button. A link "Having problem in Register? click here..." is at the bottom.

Register with RecordShield.Net

* All fields are mandatory for registration.

Full Name :

E-mail :

Confirm Email :

Mobile : +91-

Captcha :

[Having problem in Register? click here...](#)

New User Registration

- You must have active internet connection at the time of Registration.
- On completing registration process you will receive password on email and mobile.
- Register Problem, Click on the link below the Register button.



Your account with RioPlay (Existing User)

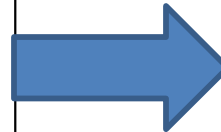


Existing User (Login)

- If you are existing user you can login with your credentials.
- Your username is your email ID and your password is “your entered password while new user registration”.
- Keep in mind you can login to one device at a time.



How to Get the Videos

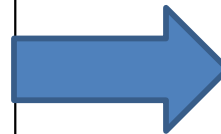


Pen Drive Version

- Connect the Pen Drive to the Computer.

Cloud Version

- In Cloud Version, you will get the Email, containing the Cloud Version Link of that product.
- Need to download all videos from the cloud version link.



Hello
Students,

Please download the Inter Account – Feb 2018 (Cloud Version) lectures from the link below,

<https://1drv.ms/f/s!Apw3zGk-8ml9gS5uYeaYyLXtwVcU>

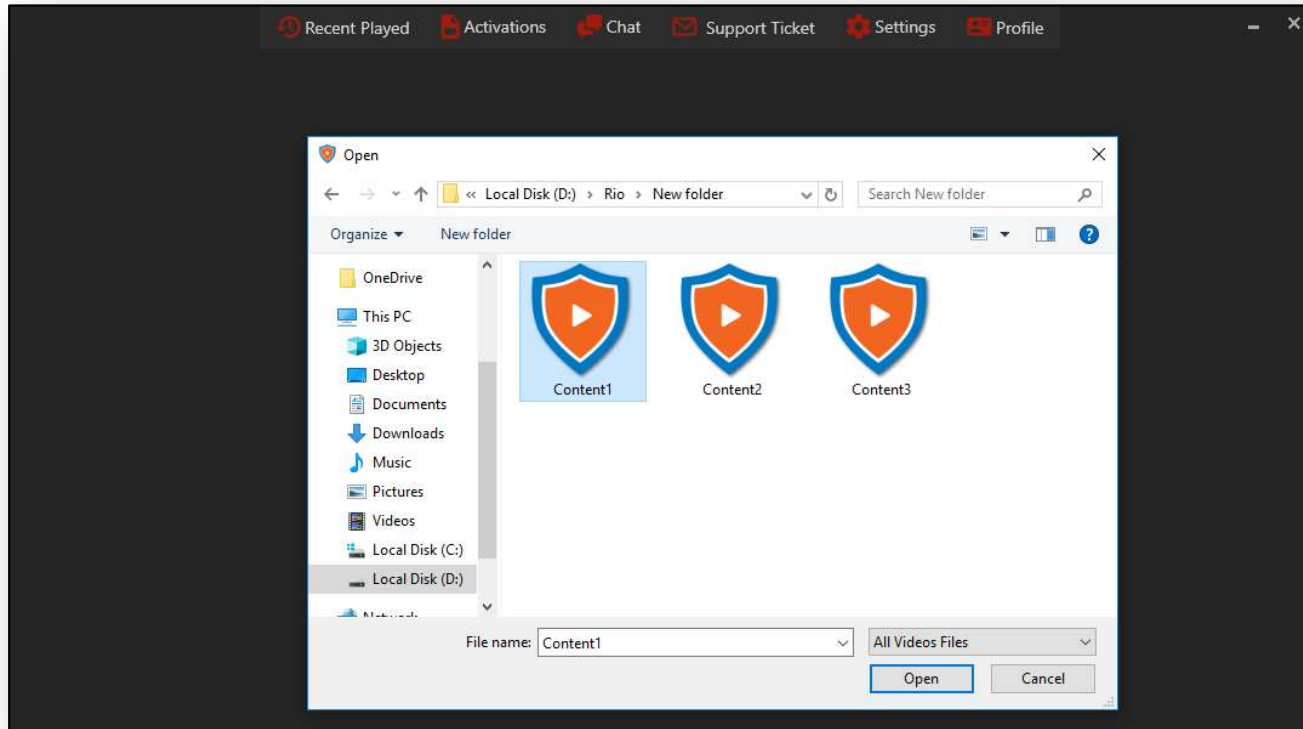
Once you click on link you will be redirected to google drive folder where you can view all the video lectures uploaded (.rio Format).

You can start downloading individual lecture. Once you complete the download you are ready to play the lectures but before you start playing lectures you will need to install **RioPlayer 2.0**.

The installation process for Rioplayer is attached with this email. But the brief steps to complete the process is as below, you can install Rioplayer either on windows operating system (Windows 7, 8, 8.1 and 10) or on any android phone or tablet with Android 14.0(Ice Cream Sandwich) and above.



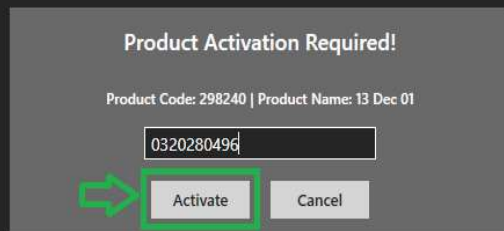
Open the Lectures & Activation



- Click on folder selection icon to open the desired video
- Select the video of the product you want to open.
- It will ask for activation.
- Enter the serial key which is in the Email you got.



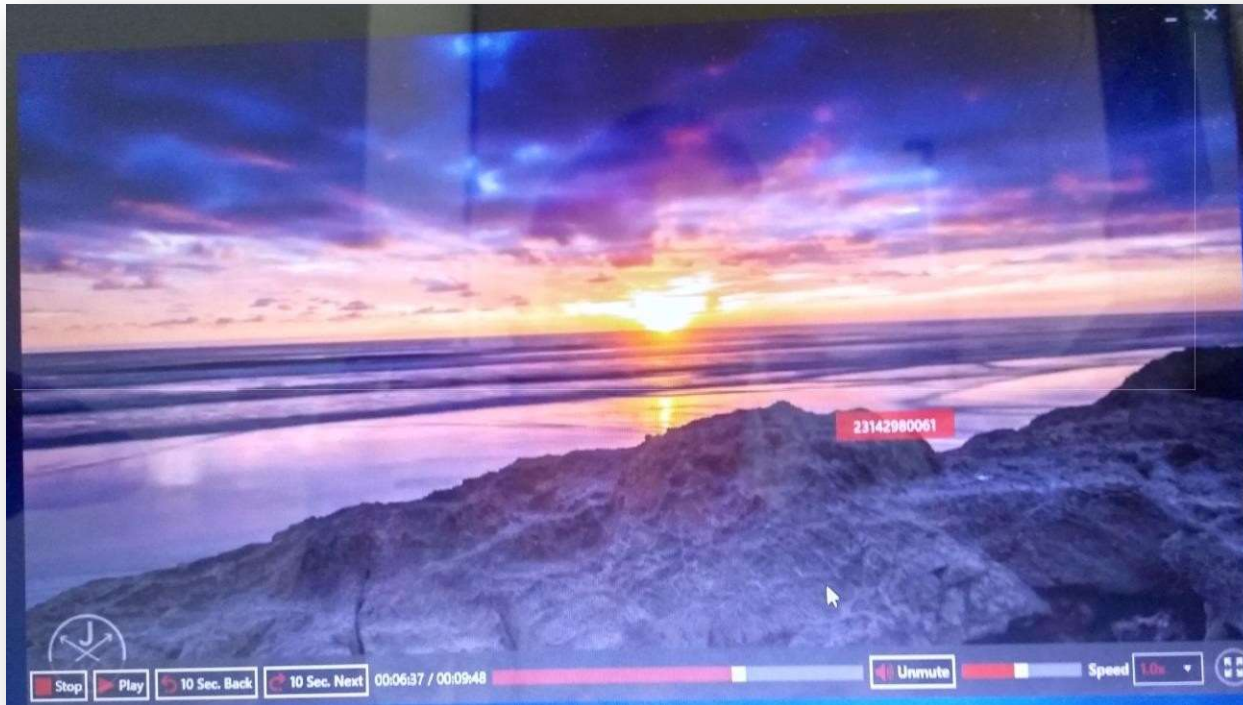
Open the Lectures & Activation



- You must have active internet connection while activating the product
- After activation, you can now play the video lectures.



Play the Lectures After Activation



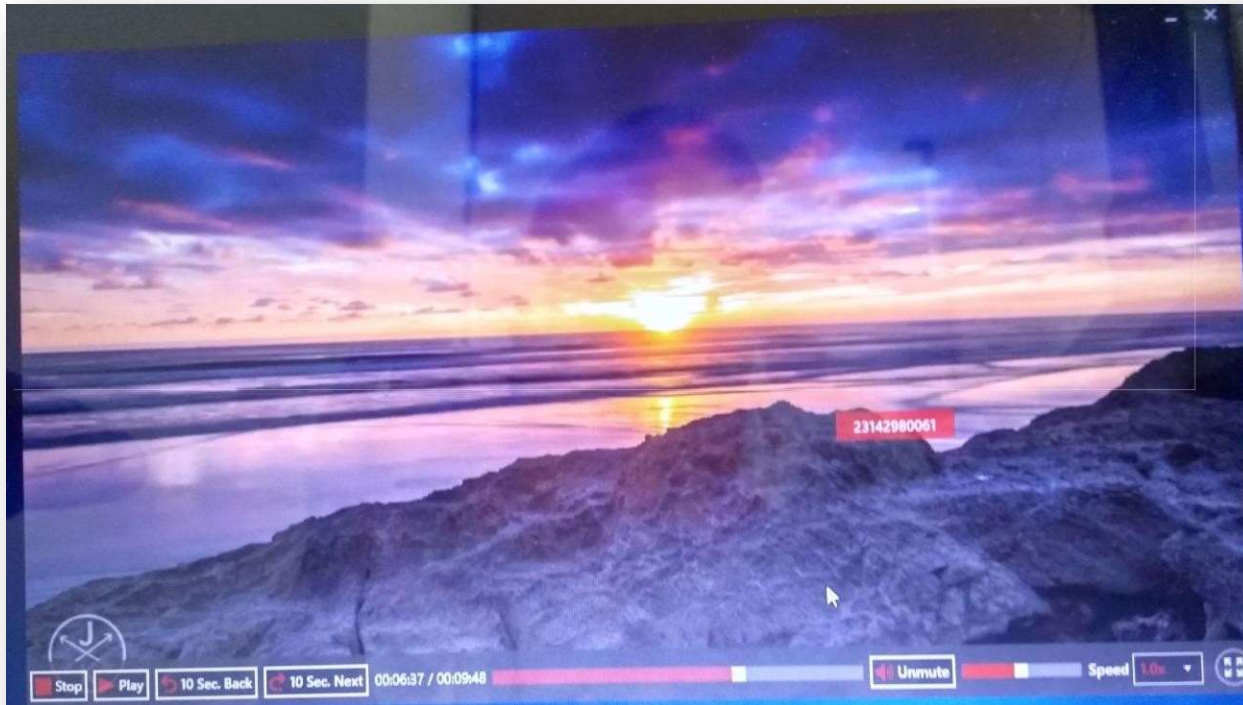
Views

-- means "the count defined as how many times the user can open & close the same video." Here I select as 50. Means user can open the particular video 50 times.

Watch Time

-- It decides the limited length of the video which user can see. Ex. 1.8 times, the user can see the video at time length limited at 1.8 times the original length.

Controls of Video Player



Stop: If you Open your Video it will directly played, Now you can stop your video by clicking the stop button.

Play / Pause: Button for Play and Pause the Video.

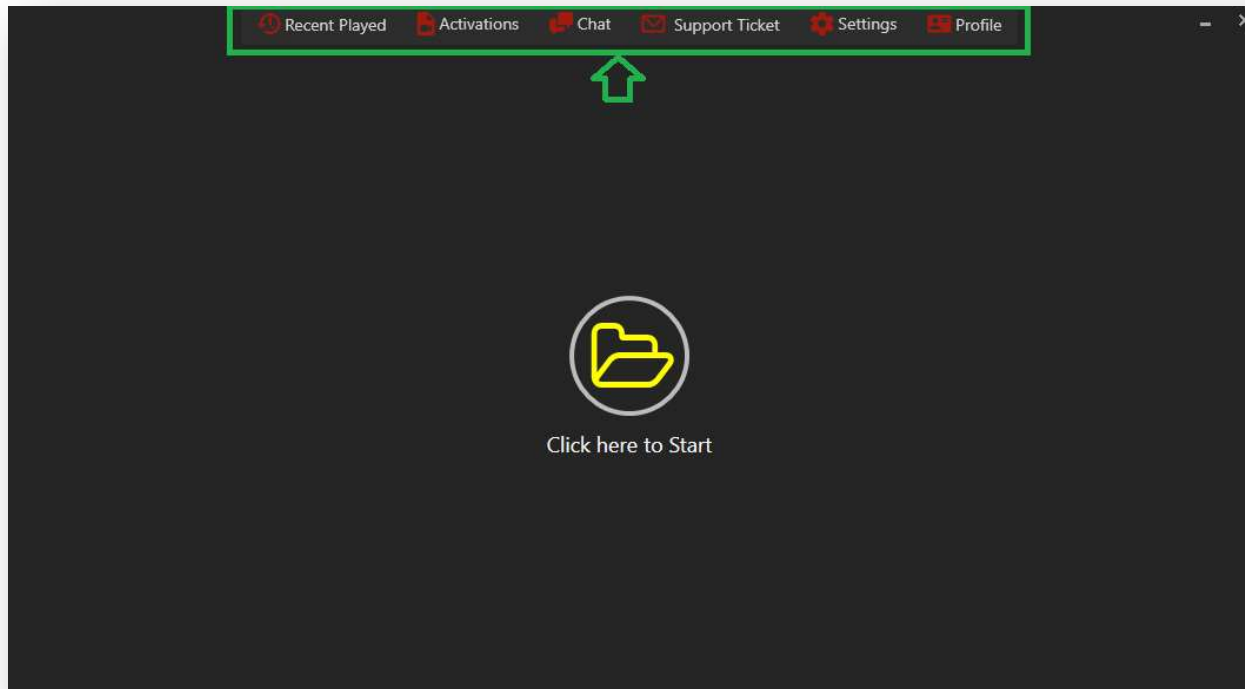
10 Seconds Back & 10 Seconds Next the Video.

Mute / Unmute the Video.

Volume of Video— 0 to 100.

Speed Ratio for setting the video speed.

Different Menu of RioPlay



Recent Played: Shows the History of played videos.

Activations: Shows the History of Activated Products.

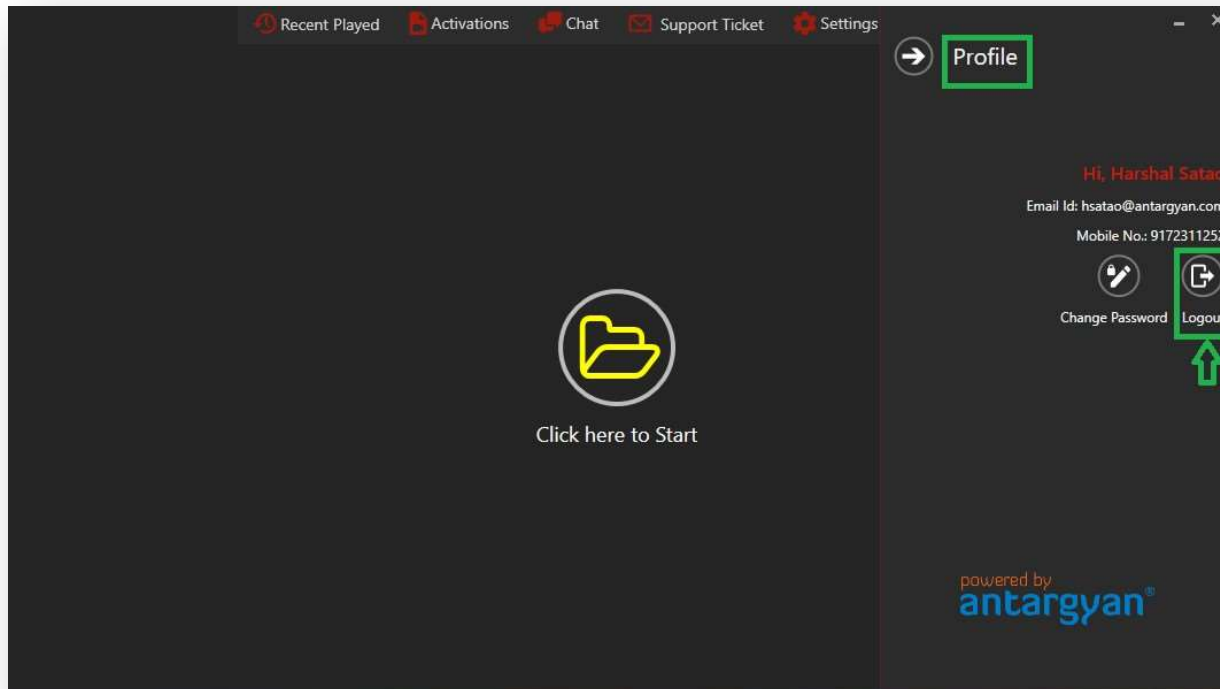
Chat: After clicking on that button, it will redirects to the browser where it opens the chat windows to or technical support team.

Support Ticket: You can send the query to our technical support team.

Settings: Shows to change the Video Player Screen.

Profile: Shows the Details of User, Change password option & Logout Option.

Logout Process & Login to another device



Change Password: You can change your existing password of the Login to RioPlay.

Logout: To login in the new device such as another windows computer or in Android Mobile, you need to logout from the existing device. After logout, you will see the Login screen.



In case of any more Queries

The new support timings are as below,

| | |
|--|---|
| Monday to Friday Chat, email and whatsapp 7.00 am to 9.00 pm Phone 10.00 am to 5.00 pm | Saturday Chat, email and whatsapp 9.00 am to 6.00 pm Phone 10.00 am to 5.00 pm |
| Sunday Chat, email and whatsapp 9.00 am to 6.00 pm Phone No incoming emails, team will email in case of critical issue. | Support Details Chat and whatsapp 8983789829 / 9404994040 Email cs@recordshield.net |

Note: email based support will not be available on public holidays.



Thank you!